

Welcome to Broadoak Academy

KS4 Curriculum Event

Wednesday
17 September 2025



BROADOAK
ACADEMY

Introductions

Mr McGilloway
Principal



Mrs Ridge
Vice Principal



Mr McFaul
Assistant Principal



Mrs Simpson
KS4 Raising
Standards Lead



Ms Wilde
Careers and
Aspirations Lead



Mrs Turk
PSHE coordinator



BROADOAK
ACADEMY



Aim tonight:



How can we help
KS4 (Year 10 and Year 11)
students become
successful learners?

Agenda:

1. What do **we** do to help students become successful learners?
2. What can **students** do to become better learners
3. What can **you** do?



KS4... the road ahead



KS4 Curriculum Overview

Core Subjects:

Students in Y10/Y11 study all core subjects and are allocated 5 periods of each a week:

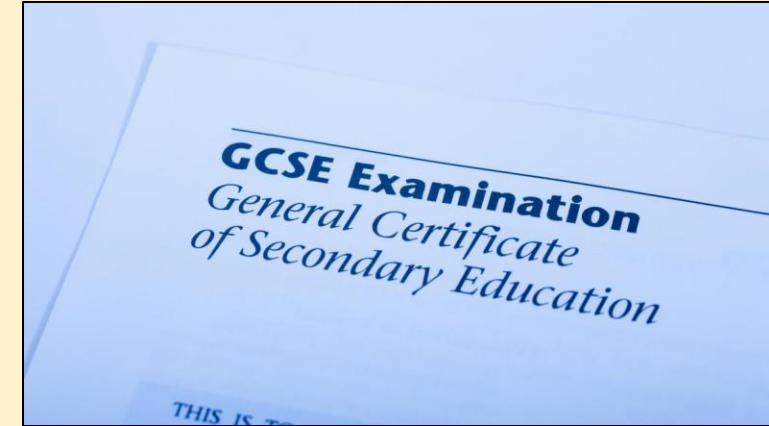
- English Literature
- English Language
- Maths (opportunity for Further Maths in Y11)
- Science (Combined or Separate*) – students who study separate science are allocated 9 periods as they are studying towards 3 separate science GCSE grades.

Option Subjects:

Alongside their core subjects, students at KS4 also study 4 'options' based on their preferences chosen in Y9.

These options are divided into 4 blocks A-D and are allocated 3 periods a week. This is usually a double and a single lesson.

Studying all the above will ensure a child in KS4 comes out with at least 9 GCSE qualifications.

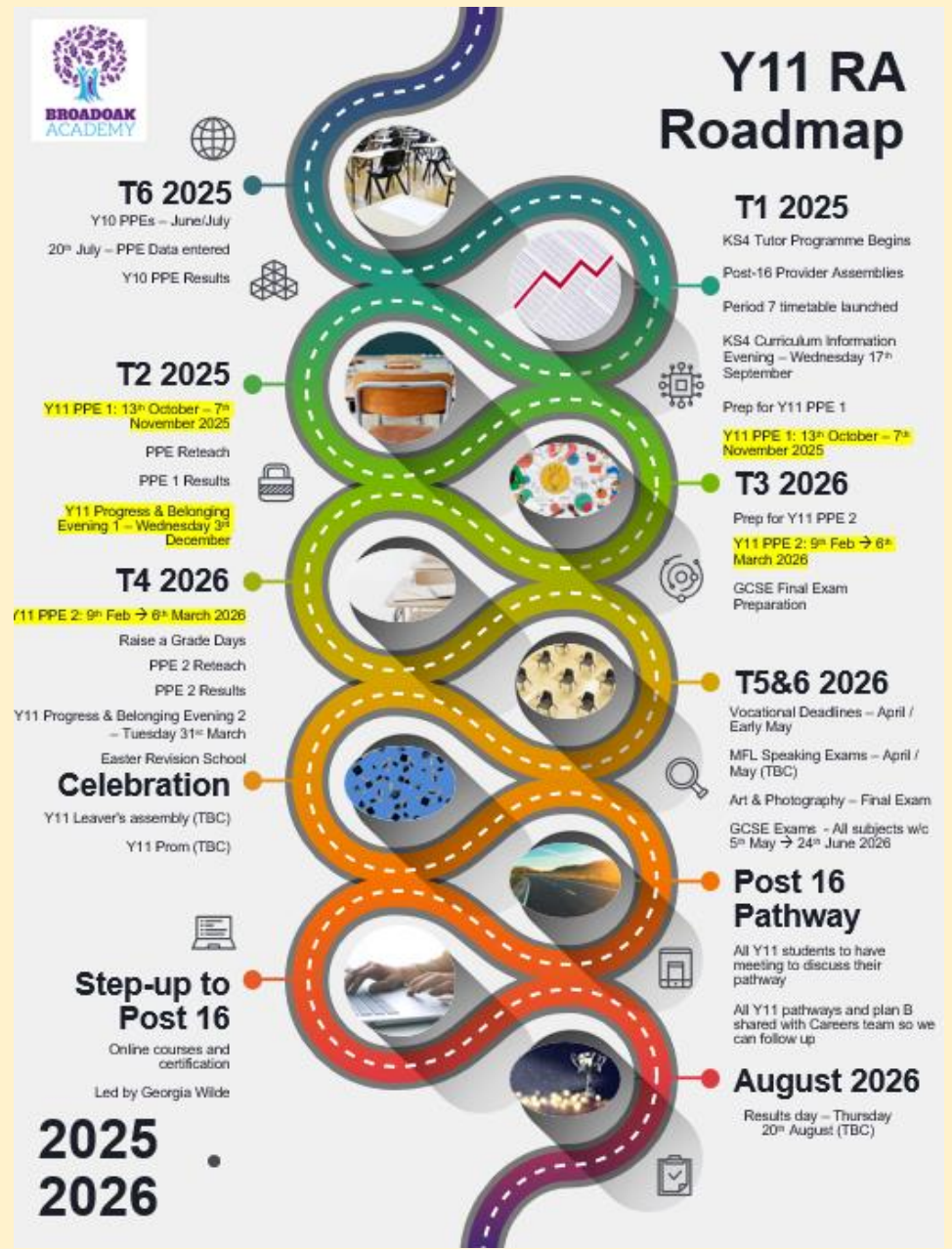
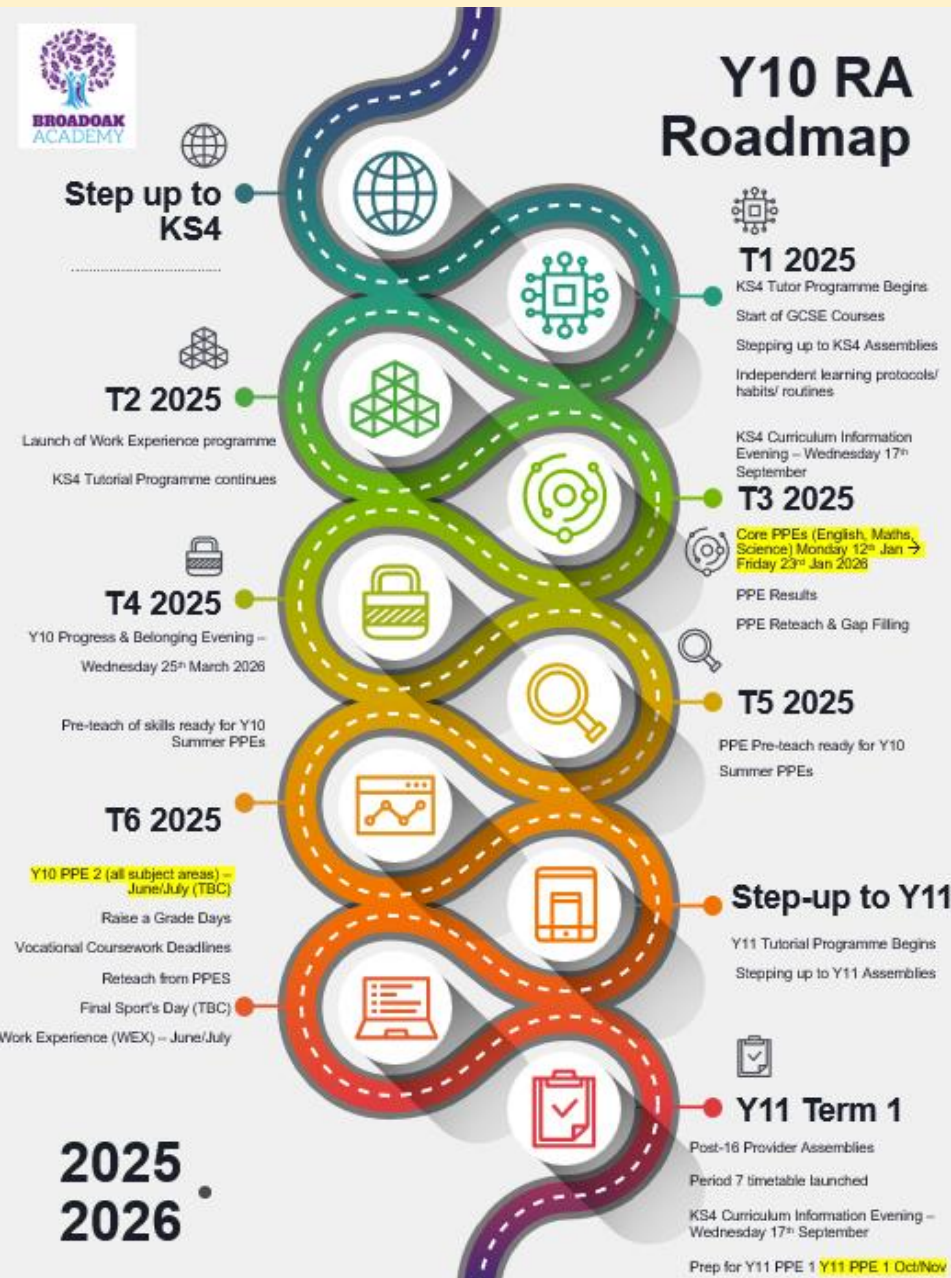


Y10 2025-2027 Curriculum Overview

Subject	Exam Board	Link to Specification	Teaching Allocation (50 min periods)
English Literature	AQA	English Specification	5 periods
English Language	AQA	English Specification	
Maths	AQA	Maths Specification	5 periods
Science (Combined)	Edexcel	Science Specification	5 periods
Science (Separate)	Edexcel	Biology - Biology Specification / Chemistry – Chemistry Specification / Physics - Physics Specification	9 periods
French (new spec)	AQA	French Specification	3 periods
Spanish (new spec)	AQA	Spanish Specification	3 periods
Geography	AQA	Geography Specification	3 periods
History	Edexcel	History Specification	3 periods
Ethics & Philosophy	WJEC	Ethics Specification	3 periods
Computer Science	OCR	Computer Science Specification	3 periods
Citizenship	AQA	Citizenship Specification	3 periods
Design & Technology	WJEC	DT Specification	3 periods
Art & Design (Fine Art)	AQA	Art Specification	3 periods
Art & Design (Photography)	AQA	Photography Specification	3 periods
Business	Edexcel	Business Specification	3 periods
Statistics	Edexcel	Statistics Specification	3 periods
Hospitality & Catering	WJEC	Catering Specification	3 periods
Music	AQA	Music Specification	3 periods
Health & Social Care	OCR	HSC Specification	3 periods
Sport	BTEC	Sport Specification	3 periods
Drama (Performing Arts)	BTEC	Drama Specification	3 periods

Y11 2024-2026 Curriculum Overview

Subject	Exam Board	Link to Specification	Teaching Allocation (50 min periods)
English Literature	AQA	English Specification	5 periods
English Language	AQA	English Specification	
Maths	AQA	Maths Specification	5 periods
Science (Combined)	Edexcel	Science Specification	5 periods
Science (Separate)	Edexcel	Biology - Biology Specification / Chemistry – Chemistry Specification / Physics - Physics Specification	9 periods
French (new spec)	AQA	French Specification	3 periods
Spanish (new spec)	AQA	Spanish Specification	3 periods
Geography	AQA	Geography Specification	3 periods
History	Edexcel	History Specification	3 periods
Ethics & Philosophy	WJEC	Ethics Specification	3 periods
Computer Science	OCR	Computer Science Specification	3 periods
Citizenship	AQA	Citizenship Specification	3 periods
Design & Technology	WJEC	DT Specification	3 periods
Art & Design (Fine Art)	AQA	Art Specification	3 periods
Art & Design (Photography)	AQA	Photography Specification	3 periods
Hospitality & Catering	WJEC	Catering Specification	3 periods
Music	AQA	Music Specification	3 periods
Health & Social Care	OCR	HSC Specification	3 periods
Sport	BTEC	Sport Specification	3 periods
Drama (Performing Arts)	BTEC	Drama Specification	3 periods



*There are also three SEND information evenings scheduled across the year (1 Oct, 28 Jan and 08 Jul)

KS4 PPEs (Pre-public exam)



What is a PPE?

A PPE is a Pre-Public Exam (mock) which allows students to have a practice run of their exams. They also allow teachers and students to see their current working grade and identify gaps in learning.

How do they work?

In total students will sit 4 sets of PPEs across KS4 prior to their Summer GCSE exams.



KS4 PPE windows*

Year 10				
PPE 1	Term 3	Core subjects (Eng, Maths, Science)	Mon 12 Jan	Fri 23 Jan
PPE 2 (tbc)	Term 6	Most subjects	Mon 15 Jun	Fri 26 Jun

Year 11				
PPE 1 (either side of half-term)	Term 1/2	Most subjects	Mon 13 Oct	Fri 07 Nov
PPE 2 (either side of half-term)	Term 3/4	Most subjects	Mon 09 Feb	Fri 06 Mar

GCSE window (tbc)				
GCSE exams (either side of half-term)	Term 5/6	All subjects	Mon 04 May	Fri 26 Jun

Y10 PPE 2

PPE Survival Kit

Thursday 19th June → Tuesday 8th July 2025

Everything you need to know to help you prepare for your upcoming PPEs.



Contents

1. PPE Timetable
2. Content of PPEs
3. Revision & Exam Support
 - Specification links
 - Revision website links
 - Online revision videos
4. Key Website Links
5. Example Y11 Roadmap
6. Example Y11 Period 7 Timetable



Example PPE Timetable...

Monday 16th June → Friday 20th June 2025

Day	Monday 16 th June	Tuesday 17 th June	Wednesday 18 th June		Thursday 19 th June		Friday 20 th	
Tutor 8:30am	Tutor Time		Main Hall – all students		Tutor Time		Tutor Time	
AM Session 9:00am exam start	Timetabled lessons PPE Pre-teach	Timetabled lessons PPE Pre-teach	Geography Field Trip	Maths Masterclasses	Drama Exam 2 hours	Timetabled lessons PPE Pre-teach	Technology 1 hour 30 mins Citizenship Paper 2 1 hour 45 mins	Timetabled lessons PPE Pre-teach
Break 10:45-11:05am								
P3/4 11:05- 12:45pm	Timetabled lessons PPE Pre-teach	Timetabled lessons PPE Pre-teach	Geography Field Trip	English Masterclasses	Timetabled lessons PPE Pre-teach	Timetabled lessons PPE Pre-teach		
Lunch 12:45-1:15pm								
PM Session 1:20-3:00pm Exams may extend past 3pm	Timetabled lessons PPE Pre-teach	Timetabled lessons PPE Pre-teach	Geography Field Trip	Options Masterclasses Normal timetabled lessons	Ethics Paper 1 1 hr Computer Science Paper 1 1 hr 30 mins	Timetabled lessons PPE Pre-teach	Timetabled lessons Hutton Moor / PE	
3:15-4:15pm	After school revision – C1 / Common Room	After school revision – C1 / Common Room	After school revision – C1 / Common Room	After school revision – C1 / Common Room	After school revision – C1 / Common Room	After school revision – C1 / Common Room		

Example PPE Timetable...

Monday 30th June → Friday 4th July 2025

Day	Monday 30 th June	Tuesday 1 st July	Wednesday 2 nd July	Thursday 3 rd July	Friday 4 th July		
8:00 → 8:30am	Breakfast Revision – C1	Breakfast Revision – C1	Breakfast Revision – C1	Breakfast Revision – C1	INSET DAY		
Exam briefing 8:30am	Y11 Exam Briefing Main Hall	Y11 Exam Briefing Main Hall	Y11 Exam Briefing Main Hall	Y11 Exam Briefing Main Hall	INSET DAY		
AM Session 9:00am exam start	Chemistry Paper 1 CS - 1 hr 10 mins SS - 1 hr 45 mins	French & Spanish Listening & Reading	Timetabled Lessons Post PPE reteach	Maths Paper 2 Calculator 1 hr 30 mins	Physics Paper 1 CS - 1 hr 10 mins SS - 1 hr 45 mins	INSET DAY	
Break 10:45-11:05am							
P3/4 11:05-12:45pm	Timetabled Lessons	Timetabled Lessons Post PPE reteach	Timetabled Lessons Post PPE reteach	Timetabled Lessons Post PPE reteach	INSET DAY		
Lunch 12:45-1:15pm							
PM Session 1:20-3:00pm Exams may extend past 3pm	Catering 1 hour 30 mins Timetabled Lessons	Ethics Paper 2 1 hour <i>(students return to lessons after exam)</i> Computer Science Paper 2 1 hour 30 mins	Timetabled Lessons Post PPE reteach	Geography P2/3 (hybrid) 1 hour <i>(students return to lessons after exam)</i>	Timetabled Lessons Post PPE reteach	History Paper 2 55 mins <i>(students return to lessons after exam)</i> Timetabled Lessons Post PPE reteach	INSET DAY
3:15-4:15pm	After school revision – C1 / Common Room	After school revision – C1 / Common Room	After school revision – C1 / Common Room	After school revision – C1 / Common Room	After school revision – C1 / Common Room		

PPE Contents & Coverage

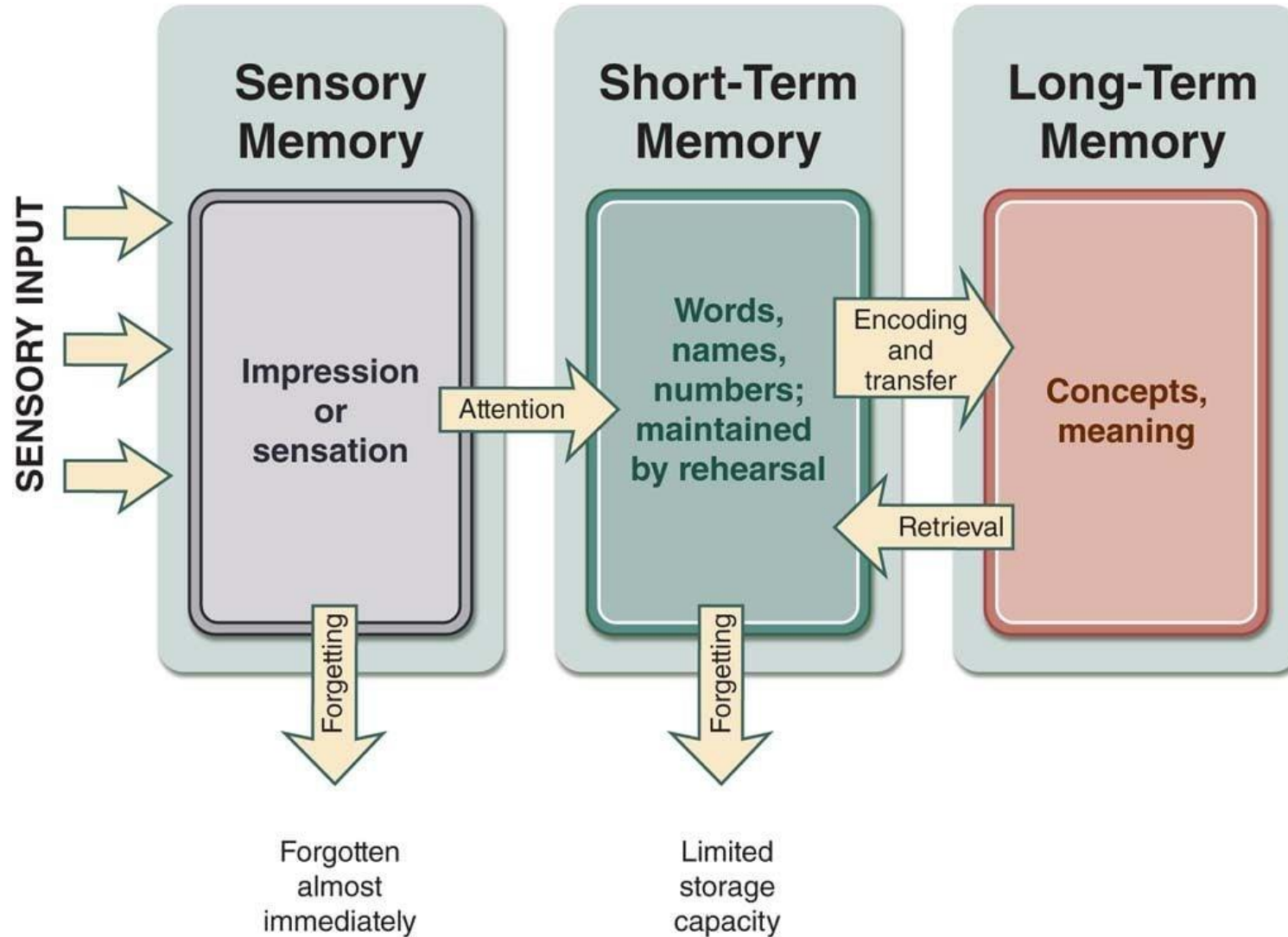
Subject	Y10 PPE 1 Papers & Timings	PPE Contents & Useful Information
<p>Maths</p> <p>Exam board: AQA</p>	<p>Paper 1: Non-Calculator</p> <p>1 hour 30 mins</p> <hr/> <p>Paper 2: Calculator</p> <p>1 hour 30 mins</p> <hr/> <p>Paper 3: Calculator</p> <p>1 hour 30 mins</p>	<p>Exam content can cover any topic from the AQA GCSE Maths (8300) specification.</p> <p>All papers total 80 marks (totalling 240)</p> <p>Past paper questions (sorted by topic) can be found here, along with solutions.</p> <p>Actual past papers can be taken from the shelves in B3, along with an accompanying answer sheet (containing QR codes to take students to relevant YouTube video walkthroughs).</p> <p>If students do not own their own calculator, the Casio FX 83 GT X is highly recommended. It can be purchased off Amazon here.</p> <p>Revision Resources:</p> <ul style="list-style-type: none"> • https://www.youtube.com/channel/UCcgZeHfol1Hs8MjvoLs79oQ • https://www.hannahkettlemaths.co.uk/half-past-papers • https://www.tiktok.com/@hannahkettlemaths?lang=en
<p>English Literature</p> <p>Exam board: AQA</p>	<p>English Literature Paper 1: Full Paper</p> <p>Timing: 1hour 45 minutes</p>	<p>Section A: Macbeth</p> <p>Section B: A Christmas Carol</p> <p>In Section A and B students will be given an extract from the set text and will write a 2-part essay response to a question about a character, theme or relationship. For Section A they are also awarded marks for spelling, punctuation and grammar. The exam is a closed book exam so students will need to memorise key quotes and references.</p> <p>Revision Resources:</p> <p>https://www.bbc.co.uk/bitesize/topics/zgq3dmn</p> <p>https://www.bbc.co.uk/bitesize/topics/zwhkxsg</p> <p>There are additional past papers on Show My Homework</p>
<p>English Language</p> <p>Exam board: AQA</p>	<p>English Language Paper 2</p> <p>Timing: 1hour 45mins</p>	<p>Reading and Writing Non - Fiction – All the content of this exam is unseen, but students need to revise:</p> <p>How to approach this paper (we will be doing this in lessons)</p> <p>Key terms – Language and Structure devices (e.g. simile, adjective, foreshadowing...)</p> <p>How to write one of 5 types of non-fiction texts. They could be asked to write a letter, article, speech, leaflet or essay.</p> <p>Revision Resources:</p>

Agenda:

1. What do **we** do to help students become successful learners?
2. What can **students** do to become better learners
3. What can **you** do?



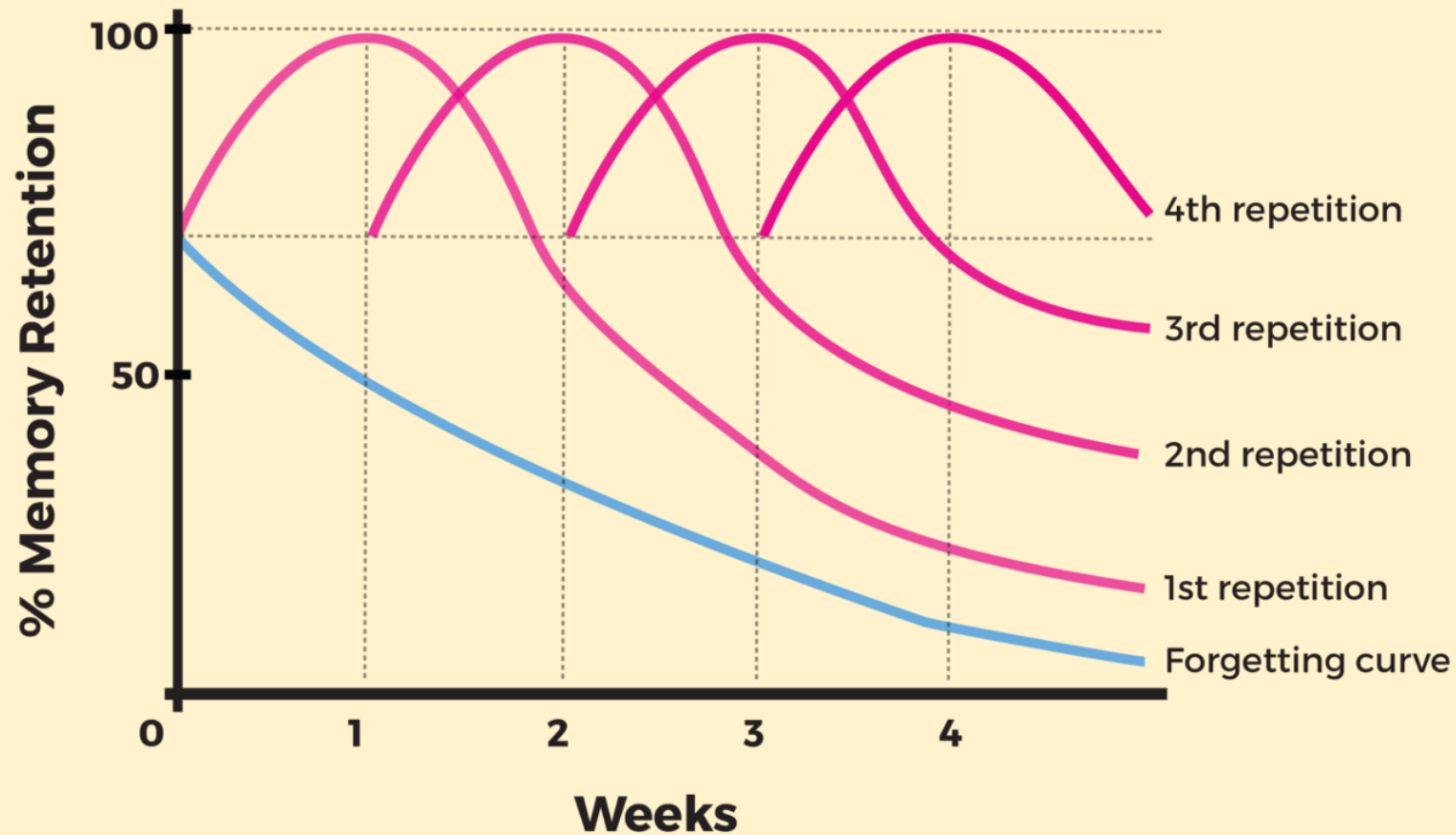
Helping students become successful learners



Helping students become successful learners

Curve of Forgetting

For newly learned information



Do Now	Knowledge test
1	<p>What is the aim of a humiliation based punishment?</p> <p>Bonus: Give an example of a medieval humiliation based punishment.</p>
2	<p>What crime did the increase in poverty lead to in Elizabethan England?</p> <p>Bonus: Why did the authorities fear this particular crime?</p>
3	<p>What key decision about Germany was decided at Yalta, confirmed at Potsdam?</p> <p>Bonus: Give at least one reason why tension increased at Potsdam.</p>

Helping students become successful learners



Spaced retrieval: Students complete the 'Do Now' at the beginning of the lesson to revisit prior learning. **Can they remember taught content?**

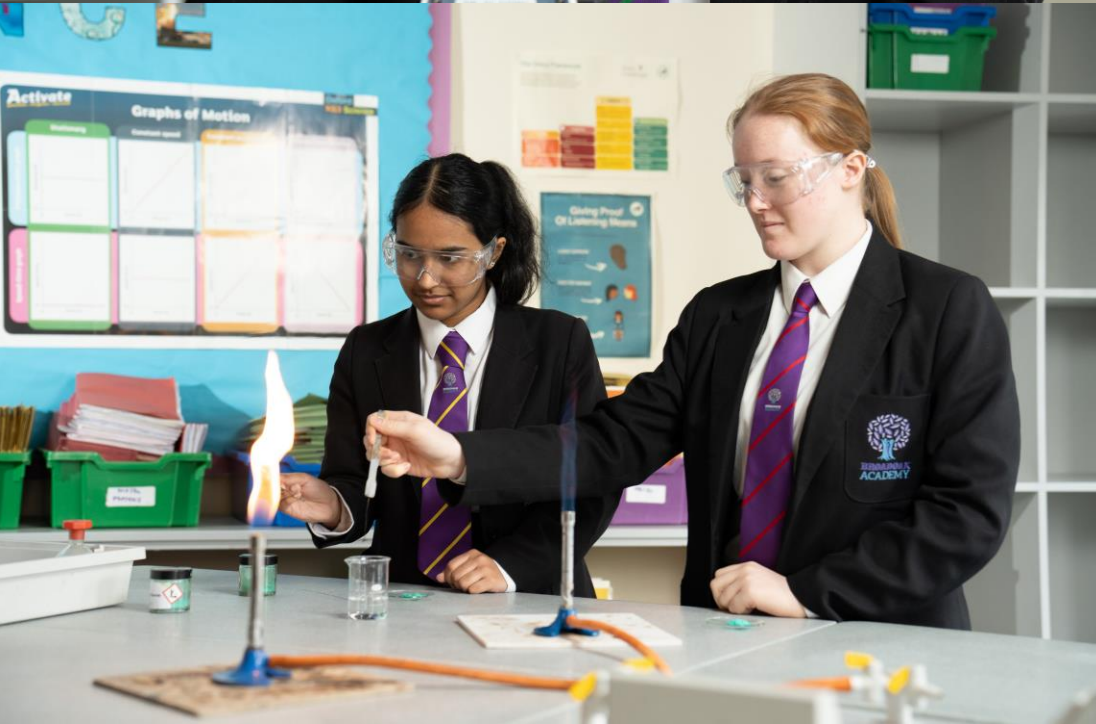


Questioning: Teachers ask students planned questions in lesson to check student understanding of learning. **Do they understand what taught content?**



Independent practice: Students practice a sequence of taught content in a focused setting. **Can they demonstrate evidence of learning?**

Agenda:



1. What do **we** do to help students become successful learners?

2. What can **students** do to become better learners

3. What can **you** do?

What can students do to become successful learners?



Spaced retrieval

1. Be on time to lessons - complete all of the Do Now
2. Identify gaps in learning - get the answers and revisit content
3. Test learning regularly – revision cards, self-quizzing, Seneca



Questioning

1. Engage with the question and provide an answer
2. Ask follow up questions to check understanding
3. Take notes of key points and write own questions for learning



Independent practice

1. Attempt the whole answer/piece of work
2. Plan work and monitor progress during the practice
3. Respond to feedback and redraft to improve

Activity 1:

Making the most of revision cards (flash cards)

Compare the two examples of revision cards.

1. Which format would be more effective in helping a student learn?
2. How could the student use these cards to learn effectively?

Example A

How does Sheila Birling change during the play?

- At first she is portrayed as superficial and sheltered. She is shocked and defensive towards the Inspector.
- She then soon accepts responsibility and shows remorse. She says "I know I'm to blame - I'm desperately sorry."
- As the play progresses, she is more assertive and morally aware. She challenges her parents and does not ignore the truth.

Example B

Sheila Birling

- Daughter of Arthur and Sybil Birling
- Engaged to Gerald Croft at the start of the play.
- At the beginning she is young and impressionable.
- She is a symbol of change and represents the younger generation's ability to learn and take responsibility.

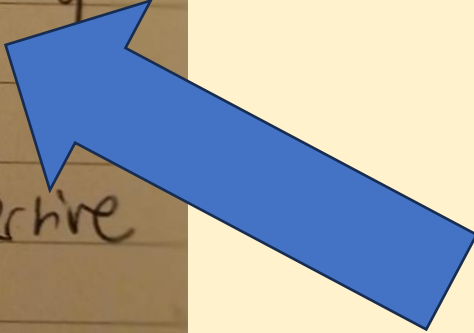
Example A

How does Sheila Birling change during the play?

- At first she is portrayed as Superficial and sheltered. She is shocked and defensive towards the Inspector.
- She then soon accepts responsibility and shows remorse. She says "I know I'm to blame - I'm desperately sorry."
- As the play progresses, she is more assertive and morally aware. She challenges her parents and does not ignore the truth.



**Question posed –
prompts analysis**

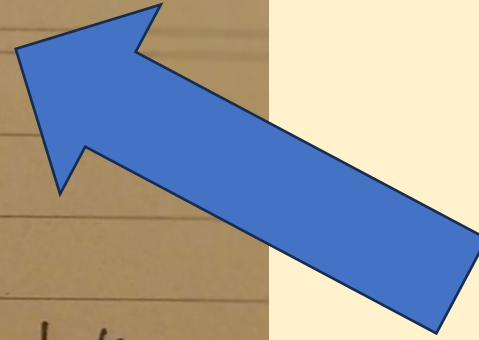


**Key quote
included**

Example B

Sheila Birling

- Daughter of Arthur and Sybil Birling
- Engaged to Gerald Croft at the start of the play.
- At the beginning she is young and impressionable.
- She is a symbol of change and represents the younger generation's ability to learn and take responsibility.



More factual – a character profile

Activity 2:

Making the most of independent practice.

Compare the two examples of independent practice.

1. Which example best shows the student engaging in the learning process?
2. What can students do to best them succeed

Example A

2 (a) Study Sources A and B in the Sources Booklet.

How useful are Sources A and B for an enquiry into the lives of people living in Whitechapel?

Explain your answer, using Sources A and B and your knowledge of the historical context.

Point
Inference
P source is important
K is supported by
L as a result

(8) 5 Q02a

Source A is useful for an enquiry into the lives of people living in Whitechapel. It describes how the poor live in comparison to the rest of London's population, "When we are snugly... storm". This suggests that the poor have no where to go, no support. This source is important and truthful as it was published. The poor would either go and work at workhouses where they would suffer terrible conditions or they beg on the street. As a result,

Example B

2 (a) Study Sources A and B in the Sources Booklet.

How useful are Sources A and B for an enquiry into the lives of people living in Whitechapel?

Explain your answer, using Sources A and B and your knowledge of the historical context.

PIPKL x 2 1 2

P	✓	✓
I	✓	✓
P	✓	✓
K	✓	✓
L	✓	✓

(8) 8 Q02a

Source A is useful for an enquiry into people's lives in Whitechapel. For example, the source states that there are 'hundreds who sleep outdoors every night'. This suggests that a lot of the population of Whitechapel isn't fortunate enough to be sleeping in (at least) doss houses, for around 4d a night, and cannot even sleep 'on the ropes' for 2d a night.

Example A

2 (a) Study Sources A and B in the Sources Booklet.

How useful are Sources A and B for an enquiry into the lives of people living in Whitechapel?

Explain your answer, using Sources A and B and your knowledge of the historical context.

Point
Inference
Poverty is important
GK is supported by
↳ as a result

(8) 5 Q02a

Source A is useful for an enquiry into the lives of people living in Whitechapel. It describes how the poor live in comparison to the rest of London's population, "When we are snugly... storm". This suggests that the poor have nowhere to go, no support. This source is important and truthful as it was published. The poor would either go and work at workhouses where they would suffer terrible conditions or they beg on the street. As a result,

Planning

Example B

2 (a) Study Sources A and B in the Sources Booklet.

How useful are Sources A and B for an enquiry into the lives of people living in Whitechapel?

Explain your answer, using Sources A and B and your knowledge of the historical context.

PIPKL x 2

	1	2
P	✓	✓
I	✓	✓
P	✓	✓
K	✓	✓
L	✓	✓

(8) 8 Q02a

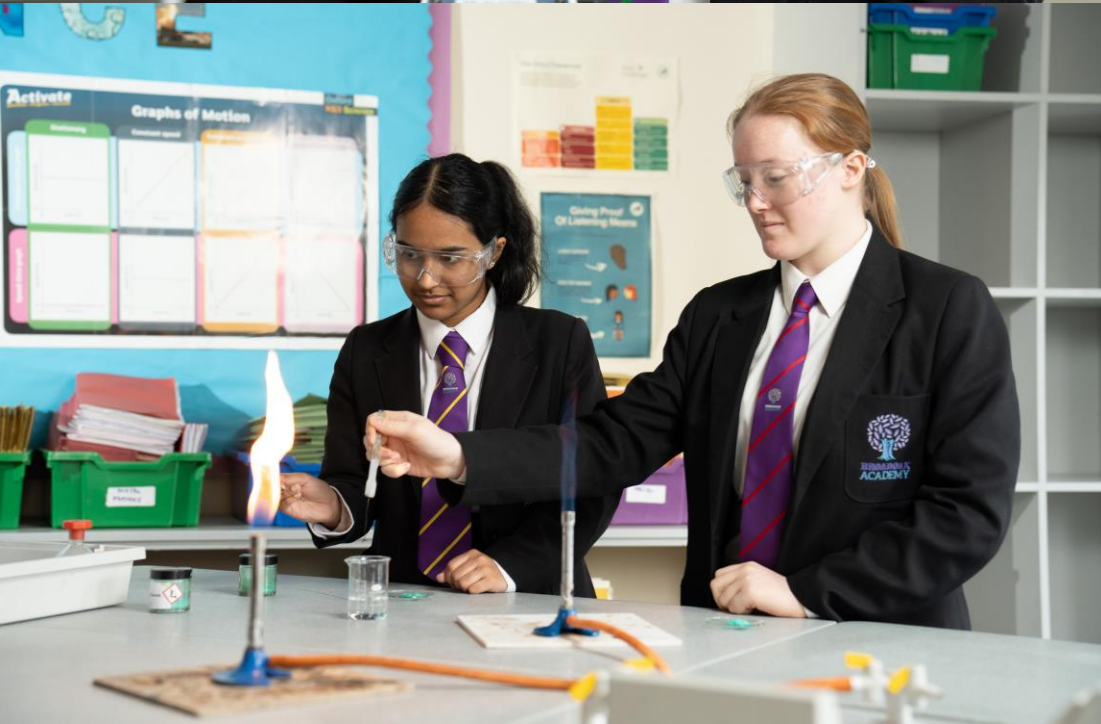
Source A is useful for an enquiry into people's lives in Whitechapel. For example the source states that there are 'hundreds who sleep outdoors every night'. This suggests that a lot of the population of Whitechapel isn't fortunate enough to be sleeping in (at least) doss houses, for around 4d a night, and cannot even sleep 'on the ropes' for 2d a night.

Monitoring

Planning

Independent learning (homework)

- Homework at Broadoak is referred to as **independent study** in recognition that this work is completed outside of class time but not necessarily always at home eg. after school club, Period 7 intervention.
- Independent study will focus on developing core knowledge and skills delivered in the classroom.
- Independent study will be made available on **Seneca**. Some teachers will issue hard copies of work to complete.
- At **KS4** independent study is set once a week per subject.



Agenda:

1. What do **we** do to help students become successful learners?
2. What can **students** do to become better learners
3. What can **you** do?

How can you help?

Support attendance to school and lessons. Every day and every lesson counts!

Support attendance to Period 7

Access Breakfast Club 8am - free

Talk to your child regularly about learning

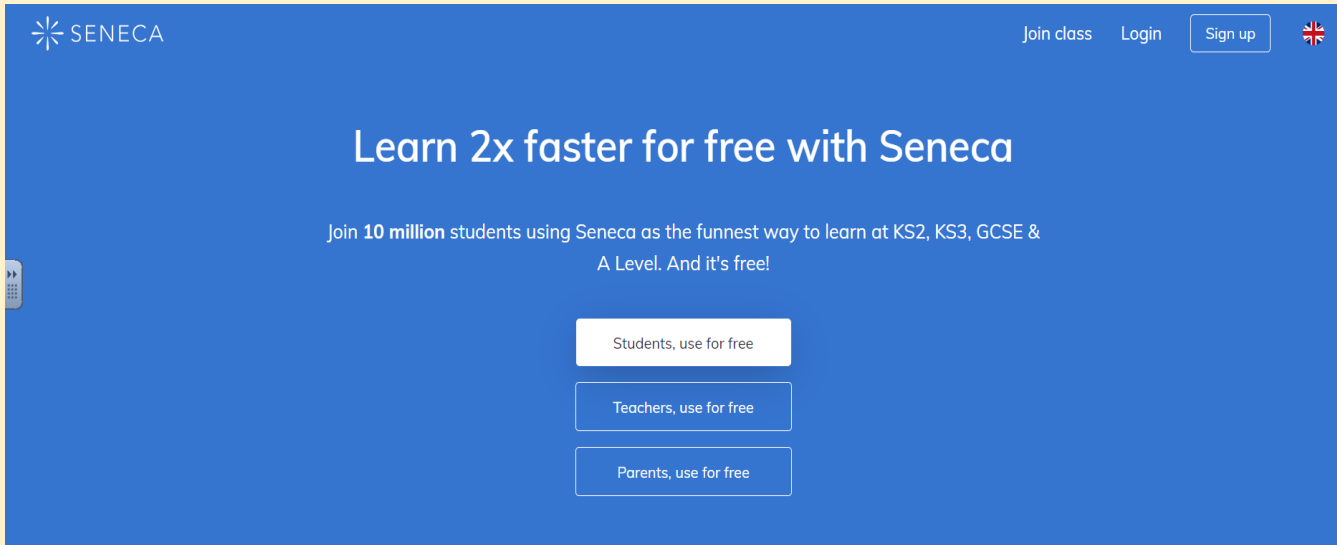
Support students to complete study outside of lessons

Check the website for regular updates


Communicate with us any concerns you may have, through their tutor in the first instance:
firstname.lastname@clf.uk or parents@broadoakacademy.clf.uk

Useful online revision resources

Seneca - <https://senecalearning.com/en-GB/>



SENECA

Join class Login Sign up 

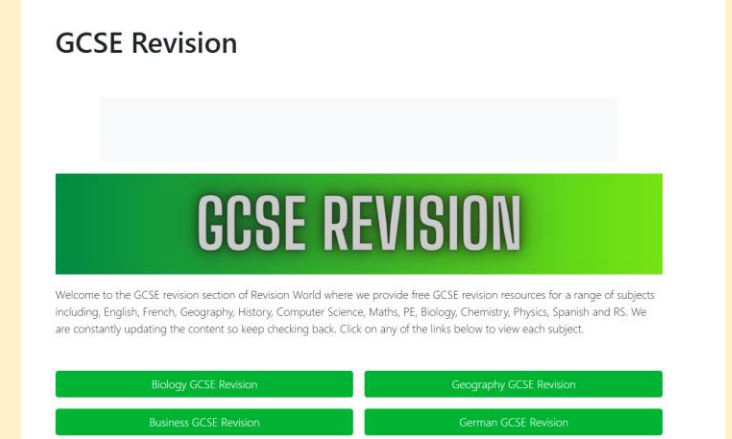
Learn 2x faster for free with Seneca

Join **10 million** students using Seneca as the funnest way to learn at KS2, KS3, GCSE & A Level. And it's free!

Students, use for free

Teachers, use for free

Parents, use for free



GCSE Revision

GCSE REVISION

Welcome to the GCSE revision section of Revision World where we provide free GCSE revision resources for a range of subjects including, English, French, Geography, History, Computer Science, Maths, PE, Biology, Chemistry, Physics, Spanish and RS. We are constantly updating the content so keep checking back. Click on any of the links below to view each subject.

Biology GCSE Revision

Geography GCSE Revision

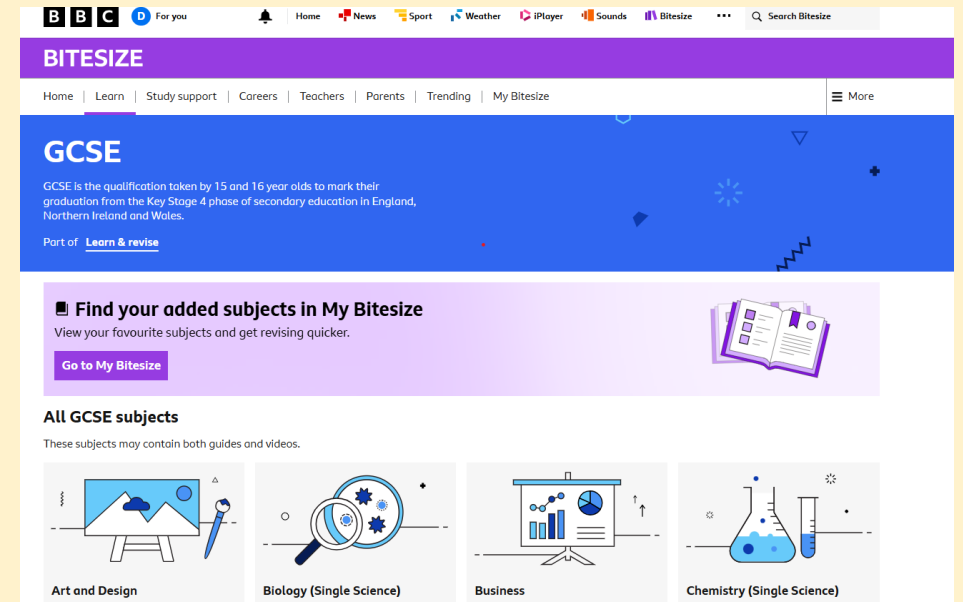
Business GCSE Revision

German GCSE Revision

<https://revisionworld.com/gcse-revision>

[BBC Bitesize -](https://www.bbc.co.uk/bitesize/levels/z98jmp3)

<https://www.bbc.co.uk/bitesize/levels/z98jmp3>



BBC For you

Home News Sport Weather iPlayer Sounds Bitesize

BITESIZE

Home | Learn | Study support | Careers | Teachers | Parents | Trending | My Bitesize

GCSE

GCSE is the qualification taken by 15 and 16 year olds to mark their graduation from the Key Stage 4 phase of secondary education in England, Northern Ireland and Wales.

Part of [Learn & revise](#)

Find your added subjects in My Bitesize

View your favourite subjects and get revising quicker.

[Go to My Bitesize](#)

All GCSE subjects

These subjects may contain both guides and videos.

- Art and Design
- Biology (Single Science)
- Business
- Chemistry (Single Science)

PSHE

(Personal, Social, Health and Economic education)

Part of the core curriculum. One lesson a week designed to help develop the whole character of the child and prepare them for life beyond school. Three key areas covered across KS4:

- **Living in the wider world**
- **Health and well being**
- **Relationships**

Speak to Mrs Turk for more information

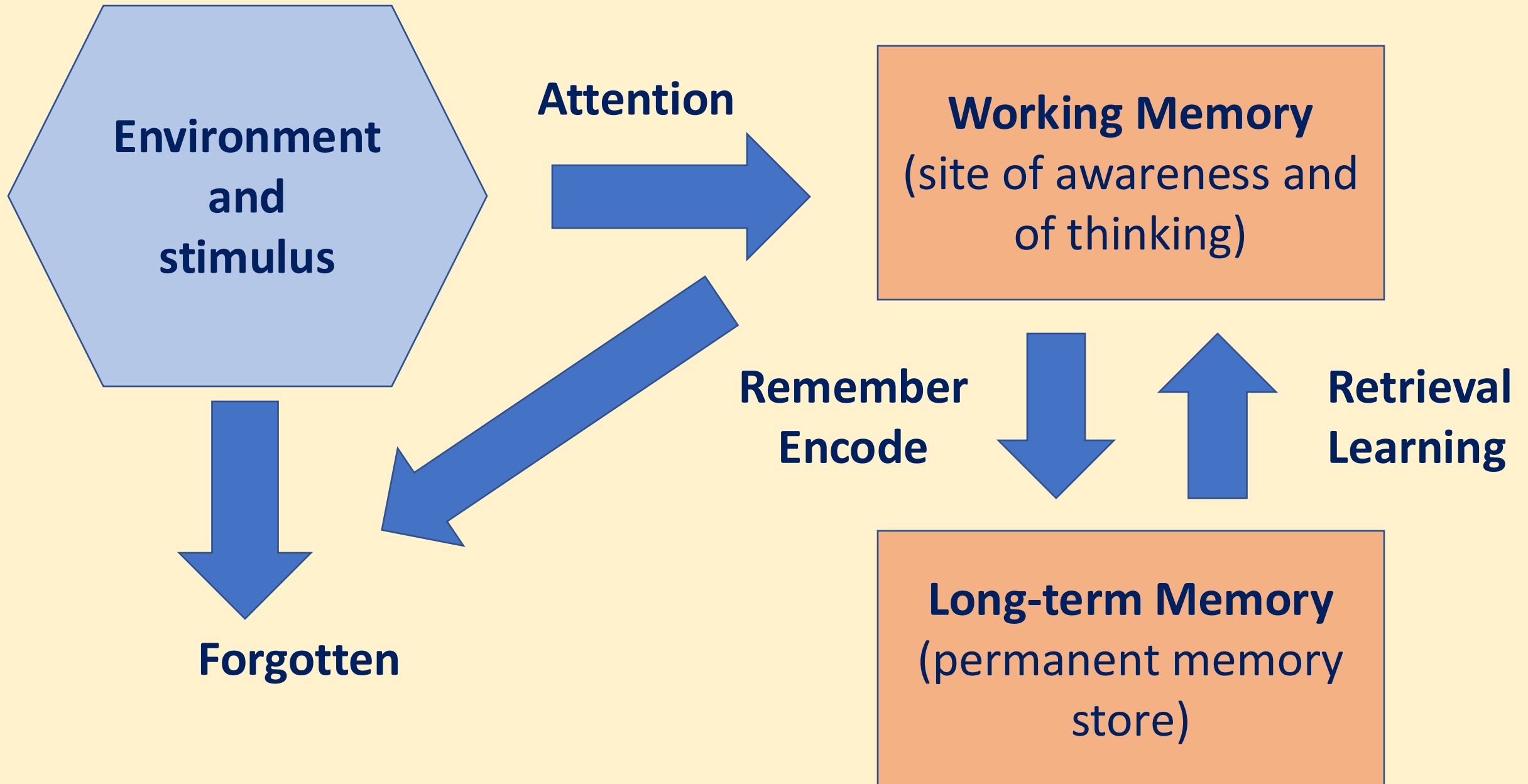


Thank you

Questions?



BROADOAK
ACADEMY





**Step up to
KS4**



Y10 RA Roadmap



T1 2025

KS4 Tutor Programme Begins
Start of GCSE Courses
Stepping up to KS4 Assemblies
Independent learning protocols/
habits/ routines



T2 2024



Launch of Work Experience programme
KS4 Tutorial Programme continues



T3 2025

KS4 Curriculum Information
Evening – Wednesday 17th
September
Core PPEs (English, Maths,
Science) Monday 12th Jan →
Friday 23rd Jan 2026



T4 2025



Y10 Progress & Belonging Evening –
Wednesday 25th March 2026



T5 2025

PPE Pre-teach ready for Y10
Summer PPEs



T6 2025



Y10 PPE 2 (all subject areas) –
June/July (TBC)

Step-up to Y11

Raise a Grade Days
Vocational Coursework Deadlines

Y11 Tutorial Programme Begins
Stepping up to Y11 Assemblies

Research from PPEs



Final Sport's Day (TBC)
Work Experience (WEX) – June/July



Y11 Term 1

Post-16 Provider Assemblies
Period 7 timetable launched
KS4 Curriculum Information Evening –
Wednesday 17th September
Prep for Y11 PPE 1 **Y11 PPE 1 Oct/Nov**

2025
2026



T6 2025

Y10 PPEs – June/July

20th July – PPE Data entered

Y10 PPE Results



Y11 RA Roadmap

T1 2025

KS4 Tutor Programme Begins

Post-16 Provider Assemblies

Period 7 timetable launched

KS4 Curriculum Information

Evening – Wednesday 17th September

Prep for Y11 PPE 1



T2 2025

Y11 PPE 1: 13th October – 7th November 2025

PPE Reteach

PPE 1 Results

Y11 Progress & Belonging Evening 1 – Thursday 3rd December



T3 2026

Prep for Y11 PPE 2

Y11 PPE 2: 9th Feb → 6th March 2026

GCSE Final Exam Preparation



T4 2026

Y11 PPE 2: 9th Feb → 6th March 2026

Raise a Grade Days

PPE 2 Reteach

PPE 2 Results

Y11 Progress & Belonging Evening 2 – Tuesday 31st March

Easter Revision School

Celebration

Y11 Leaver's assembly (TBC)

Y11 Prom (TBC)



T5&6 2026

Vocational Deadlines – April / Early May

MFL Speaking Exams – April / May (TBC)

Art & Photography – Final Exam

GCSE Exams - All subjects w/c 5th May → 24th June 2026



Post 16 Pathway

All Y11 students to have meeting to discuss their pathway

All Y11 pathways and plan B shared with Careers team so we can follow up



Step-up to Post 16

Online courses and certification

Led by Georgia White



August 2026

Results day – Thursday 20th August (TBC)



2025
2026